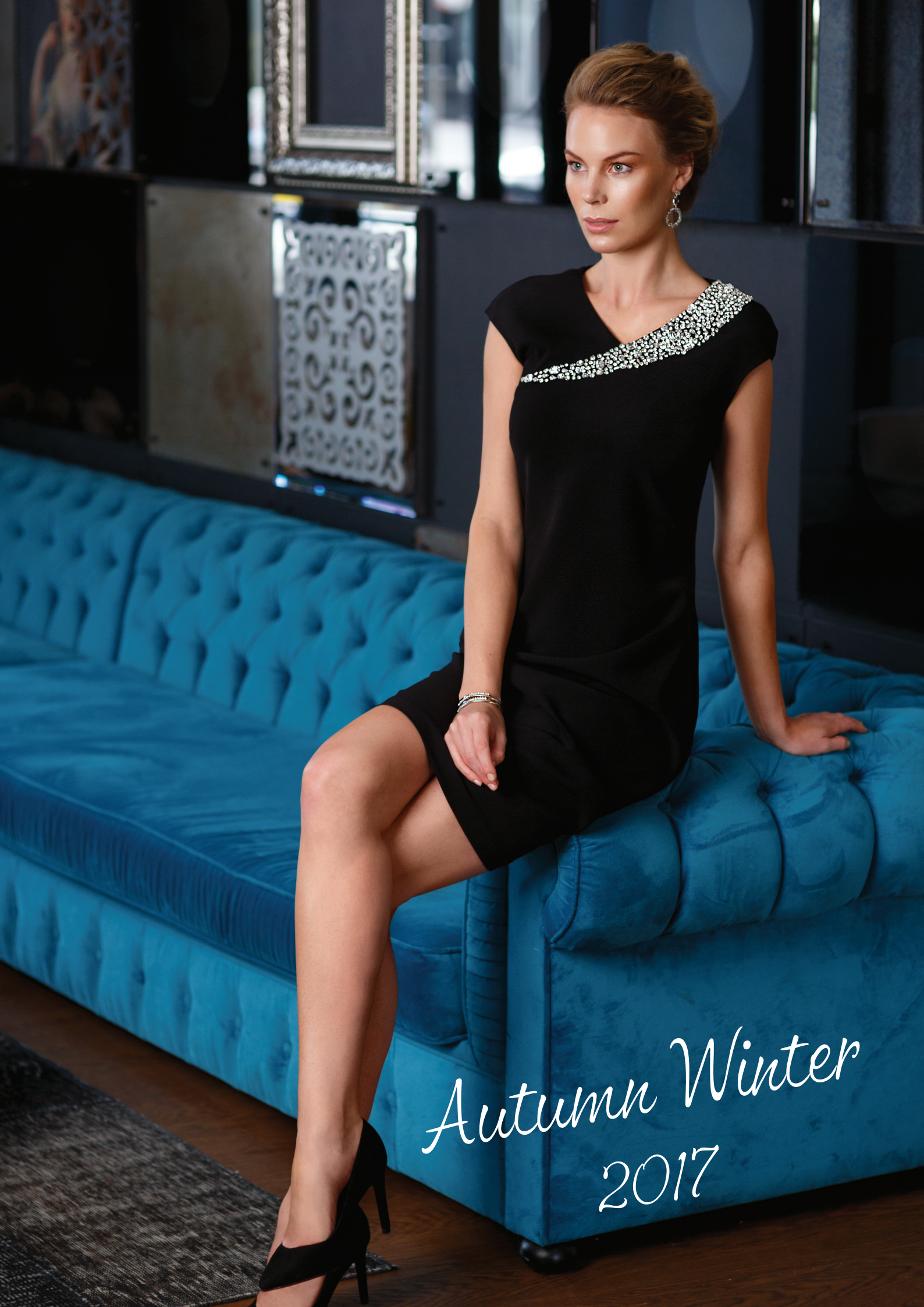


The background of the page is an abstract composition of overlapping, semi-transparent red and pink geometric shapes, primarily triangles and polygons, creating a dynamic, layered effect. The colors range from deep, dark reds to lighter, almost white pinks. The shapes are arranged in a way that suggests movement and depth, with some shapes appearing to be in front of others.

BURCIN TAGAL

Portfolio
Selected Works



*Autumn Winter
2017*









*Spring Summer
2017*









*Autumn Winter
2018*









*Autumn Winter
2019*













Spring Summer
2019





12



